



LGA BAND PASS FILTERS

BP1206 & BP2816 SERIES



[Click Here to View the BP1206 Series Datasheet](#)



[Click Here to View the BP2816 Series Datasheet](#)

BASIC OVERVIEW

KYOCERA AVX introduced a new line of LGA Band Pass Filters that exhibit low insertion loss and sharp roll-off for various applications. The new Band Pass series based on Thin-Film technology delivers excellent frequency performance and feature miniature chip sizes with rugged construction for reliable automatic assembly.

APPLICATIONS

- Military
- Handheld Radios
- Active Antenna
- Automotive
- Base Stations
- Consumer
- Test Equipment
- Emergency Services

GENERAL CHARACTERISTICS

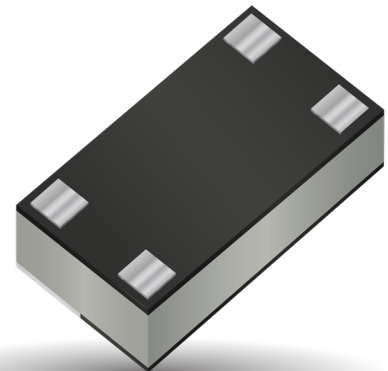
- Size: 8W in 1206, 10W in 2816
- Operating Frequency: 0.225 - 10 GHz
- Low Insertion Loss
- Steep Attenuation
- High Reliability
 - Lot-to-Lot
 - Part-to-Part
 - Temperature Stability
 - Short Lead Time

KEY SPECIFICATIONS

- Low Insertion Loss
- Sharp Roll-Off
- Miniature Case Size

TOP SELLING POINTS / CHARACTERISTICS

- KYOCERA AVX Thin Film allows quick adjustment of RF parameters.





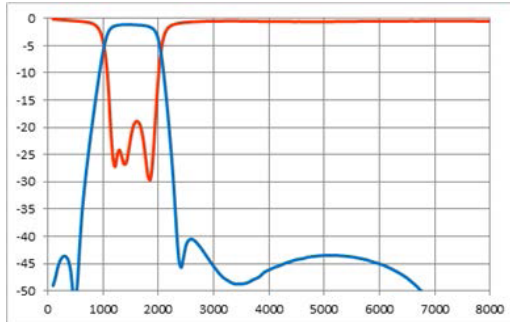
[Click Here to View the BP1206 Series Datasheet](#)



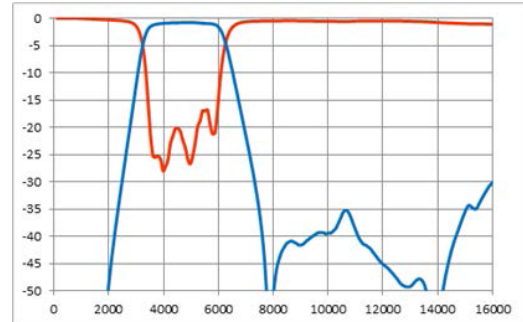
[Click Here to View the BP2816 Series Datasheet](#)

ELECTRICAL CHARACTERISTICS

BP1206

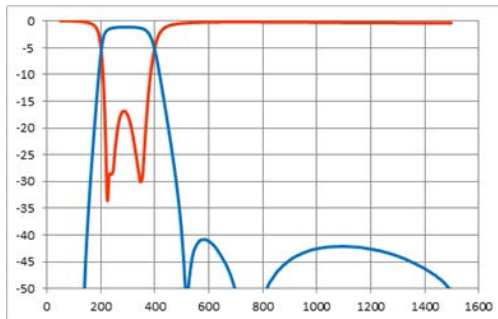


BPF 1.25 - 1.75GHz

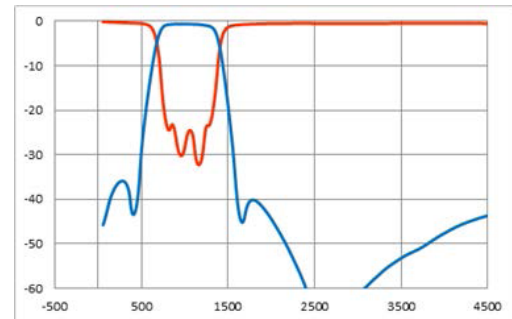


BPF 3.7 - 5.5GHz

BP2816



BPF 270 - 330 MHz



BPF 760 - 1260 MHz

FAQ'S

Q: Are these components RoHS compliant?

A: Yes.

Q: What is the standard lead time?

A: 14 Weeks.

Q: What is the standard operating temperature?

A: Between -40 °C and +85 °C.



NORTH AMERICA

Mohammed Abu-Naim

RF Product Manager

TEL: +1 864 962 6115

Email:

mohammed.abu-naim@avx.com

EUROPE

Houda Rais

RF Product Manager

TEL: +06 383 787 759

Email:

houda.rais@kyocera-avx.com

ASIA

Dennis Hu

RF Marketing Manager

TEL: +86 159 8677 0907

Email:

dennis.hu@kyocera-avx.com